

## G2731FL Dual Flip Lock Full Extension Slide

Max load 37 kg · Locks opened · Locks closed

### Features

- Full extension, 3 members slide
- Drawer locks when fully opened and closed
- Easier and safer to unlock the drawer since the unlock lever is at the end of the inner member

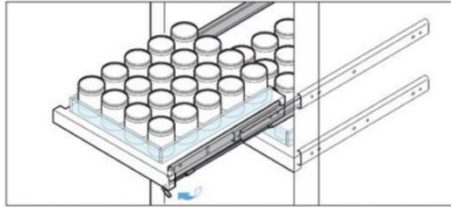


Above example is a right sided slide

### Recommended Screws

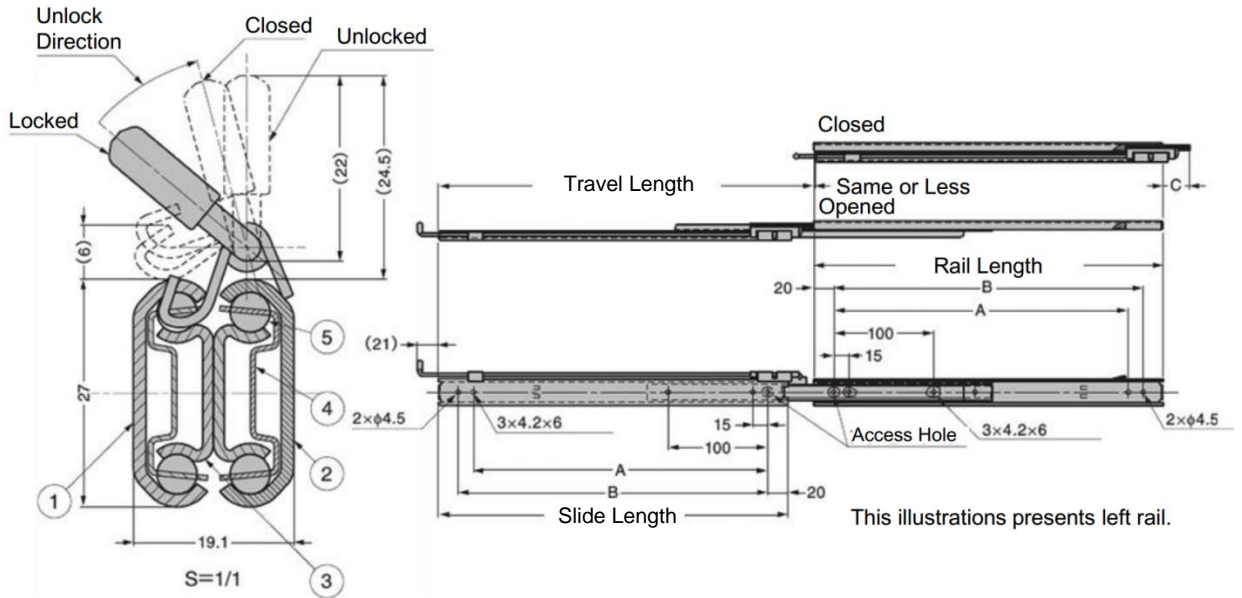
- M4 binding, M3 binding or M3 truss or 3.5 countersunk head tapping screw

### Application



Left sided rail can be flipped upside down to be used as right sided rail

No.	Part Name	Material	Finish/Colour
①	Outer Member	Steel(SPCC)	Clear Zinc Chromate (Trivalent)
②	Inner Member		
③	Middle Member		
④	Retainer	Steel (SECC)	(Zinc Plating)
⑤	Steel Balls	Steel(SWCH)	-



Sold by piece

Part No.	Slide Length	Travel Length	Side	A	B	Load Capacity (per pair)	
G2731-25FL-L	250	278	Left	195	210	363 N	37 kg
G2731-25FL-R			Right				
G2731-30FL-L	300	327	Left	245	260	353 N	36 kg
G2731-30FL-R			Right				
G2731-35FL-L	350	376	Left	295	310	333 N	34 kg
G2731-35FL-R			Right				
G2731-40FL-L	400	425	Left	345	360	314 N	32 kg
G2731-40FL-R			Right				